

June / July 2019



© Gary Minish

VALDEZ NEW BOAT HARBOR

CONSTRUCTION

Phase 2 Uplands Facilities and Inner Harbor Facilities

Pacific Pile and Marine (PPM) and subcontractors intermittently performed contract work, Punchlist tasks, Warranty service, and closeout paperwork. Harris Sand & Gravel (HSG) completed the paving and striping, placed topsoil, hydroseed and several trees at the east end of the Uplands. Zastrow finished the main entrance sign. Puffin Electric replaced a defective circuit breaker for one of the cranes on the Drive-Down Float and helped Harbormaster staff troubleshoot card reader and control issues.

DESIGN TEAM - CONSTRUCTION SUPPORT

R&M continued processing outstanding submittals and resubmittals and helped resolve work completion and punchlist problems. R&M performed pre-final civil/structural inspections, RSA inspected the electrical work, and R&M reported on the lab analysis results of samples taken from simulated bilge water before and after treatment by the Oil Trap system. Lab analysis of the treated water showed reduction in some contaminants of concern, but the Oil Trap process still needs to be adjusted to improve the cleanup per Oil Trap's performance objectives. There will be follow up treatment, sampling and analysis.

PROJECT ACHIEVEMENTS

- Completed landscaping, asphalt paving and striping at east end of the site
- Performed Substantial Completion inspections for in-water work and remaining sitework items
- Started assigning slips and boats started using the new harbor
- Received ADEC Interim Approval to Operate the Public Water System at the harbor
- Held Public Ceremony on June 29th to officially open the harbor for operation
- Initiated a mediation process with Phase 2 Contractor to resolve open cost issues



Lots of people, in food line above, enjoyed the beautiful day and the Grand Opening for the new harbor

JUNE / JULY 2019 PROJECT UPDATE (CONT.)

USACE NAVIGATION IMPROVEMENTS

The Coast Guard installed the Aids to Navigation (ATON) features on the breakwaters at the harbor entrance. The City is following up with USACE and Coast Guard on installing markers on two navigation piling outside the harbor entrance. The City contract with USACE is still open.

FUTURE MILESTONES

- Confirm the Oil Trap treatment of bilge water satisfies contract requirements
- Close out City and USACE contract for navigation dredging and breakwater work
- Complete all Work and Punchlist items, reconcile quantities and costs, and close out Phase 2 Construction Contract
- Obtain ADEC Final Approval to Operate the Public Water System at the harbor
- Complete the testing, procedures and permitting to dispose the treated bilge water



A one-person watercraft operator conscientiously practices "No Wake" speed near the big boats at R-Float. Photo courtesy of J. Talbott.

PROJECT TEAM

Nate Duval, Capital Facilities Project Manager, City of Valdez || 907.835.5478 ext. 1

Ronnie Barcak, Project Manager, USACE || 907.753.5755

Kim Nielsen, Group Manager, Waterfront Engineering, R&M Consultants || 907.646.9602

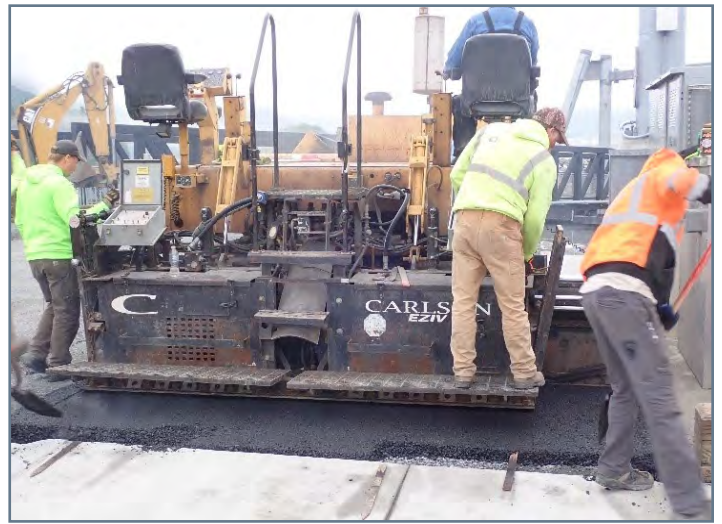
Andy Romine, Project Manager, Pacific Pile and Marine || 907.360.4580

Ron Rozak, Construction Manager, Arcadis || 907.382.2933





Coast Guard helicopter lowering a Navigation Aid to crew for installing at harbor entrance. Photo courtesy of J. Talbott.



Spreading asphalt to finish pavement at east end of Uplands



Seiners crews repair nets at the new Drive-Down Float. Photo courtesy of J. Talbott.



T-Float during Grand Opening; water cannons on SERVS tugs celebrate the event outside the harbor



One week after the Grand Opening; seiners using the Drive-Down Float. Tenders moored at R-Float; Large Seiners at S and T floats; mixture of vessels beyond Photo courtesy of J. Talbott.

PROJECT SCHEDULE

Task	2016	2017				2018				2019			
	Q4	Q1	Q2	Q3	Q4	Q1	Q2	Q3	Q4	Q1	Q2	Q3	Q4
CITY OF VALDEZ WORK													
Phase 1 Uplands (Civil work except paving)	[Gantt bar: Q4 2016 - Q1 2017]												
Phase 2 *	[Gantt bar: Q1 2017 - Q4 2019] ***												
Design/Bid/Award/NTP	[Gantt bar: Q4 2016 - Q2 2017]												
Mooring Floats	[Gantt bar: Q2 2017 - Q4 2018]												
Fabrication/Delivery	[Gantt bar: Q2 2017 - Q4 2018]												
On-site Construction including M&E startup	[Gantt bar: Q2 2018 - Q4 2019]												
Drive Down Float	[Gantt bar: Q2 2017 - Q4 2018]												
Fabrication/Delivery	[Gantt bar: Q2 2017 - Q4 2018]												
On-site Construction including M&E startup	[Gantt bar: Q2 2018 - Q4 2019]												
In-water Rock Removal	[Gantt bar: Q2 2018 - Q4 2018]												
West Rock	[Gantt bar: Q2 2018 - Q3 2018]												
East Rock	[Gantt bar: Q2 2018 - Q3 2018]												
Uplands Facilities (Warehouse, East Restroom, Bilge Water Bldg.)	[Gantt bar: Q2 2017 - Q4 2018]												
Fabrication/Delivery	[Gantt bar: Q2 2017 - Q4 2018]												
On-site Construction	[Gantt bar: Q2 2018 - Q4 2019]												
Paving/Landscaping/Site Furnishings	[Gantt bar: Q2 2018 - Q4 2019]												
Master Waterfront Plan (To be determined)	[Gantt bar: Q2 2018 - Q4 2019]												
Phase 3 Future Facilities (To be determined with Master Plan)	[Gantt bar: Q2 2018 - Q4 2019]												
Launch Ramp, Fish Cleaning Station, Wash-Down Pad, W. Restroom	[Gantt bar: Q2 2018 - Q4 2019]												
CORPS OF ENGINEERS (USACE) WORK													
Harbor Dredging and Breakwater Construction**	[Gantt bar: Q4 2016 - Q2 2017]												

*Solid lines reflect PPM's July 2019 schedule. ** WMC contract for dredging and breakwater is complete. *** Contract requires Phase 2 work be completed by October 1, 2019.

BUDGET SUMMARY

Description	Original Budget	Revised Budget	Committed	Expenditures 7/31/19	% Spent	Estimate at Completion
DESIGN	\$ 2,451,971	\$ 3,892,420	\$ 3,892,420	\$ 3,736,973	96%	\$ 3,892,420
Design	\$ 1,851,971	\$ 2,215,983	\$ 2,215,983	\$ 2,231,917	101%	\$ 2,231,917
Design Team Services During Construction	\$ 600,000	\$ 1,676,437	\$ 1,676,437	\$ 1,505,056	90%	\$ 1,660,503
PROJECT MANAGEMENT	\$ 2,340,548	\$ 3,091,906	\$ 3,087,370	\$ 2,985,302	97%	\$ 3,091,906
Project Management	\$ 1,740,548	\$ 2,710,369	\$ 2,710,369	\$ 2,609,572	96%	\$ 2,710,369
Inspection/Testing	\$ 600,000	\$ 381,537	\$ 377,001	\$ 375,730	98%	\$ 381,537
USACE CONSTRUCTION - CITY PORTION	\$ 9,345,453	\$ 7,440,980	\$ 7,122,844	\$ 4,738,650	64%	\$ 6,522,845
Initial Basin	\$ 7,145,453	\$ 7,060,980	\$ 7,060,980	\$ 4,676,785	66%	\$ 6,460,980
Other Basin Modifications	\$ 2,200,000	\$ 380,000	\$ 61,864	\$ 61,864	16%	\$ 61,864
CITY CONSTRUCTION	\$ 39,023,904	\$ 44,811,842	\$ 44,734,675	\$ 44,323,811	99%	\$ 44,797,621
Phase 1 Uplands	\$ 19,013,040	\$ 19,191,437	\$ 19,191,437	\$ 19,191,437	100%	\$ 19,191,437
Phase 2 Base/Drivedown Floats, Uplands Fac.	\$ 8,976,100	\$ 25,158,925	\$ 25,158,925	\$ 24,815,162	99%	\$ 25,144,705
Upland Facilities (with Phase 2)	\$ 4,046,643	\$ -	\$ -	\$ -	0%	\$ -
Drive Down Float (with Phase 2)	\$ 4,951,721	\$ -	\$ -	\$ -	0%	\$ -
Drive-Down Float In-water Mods (with Phase 2)	\$ 1,342,500	\$ -	\$ -	\$ -	0%	\$ -
Hotel Hill Clearing	\$ 64,900	\$ 64,900	\$ 64,900	\$ 64,900	100%	\$ 64,900
Fish Cleaning	\$ 324,000	\$ -	\$ -	\$ -	0%	\$ -
Electric Primary	\$ 225,000	\$ 311,579	\$ 311,579	\$ 252,312	81%	\$ 311,579
CCTV/Security/Head End Equipment	\$ 80,000	\$ 80,000	\$ 2,834	\$ -	0%	\$ 80,000
New Harbor Warehouse Modifications (F&W)	\$ -	\$ 5,000	\$ 5,000	\$ -	0%	\$ 5,000
ADMINISTRATION	\$ 60,000	\$ 125,000	\$ 106,745	\$ 100,214	80%	\$ 125,000
FFE	\$ 100,000	\$ 140,000	\$ 145,560	\$ 112,059	80%	\$ 140,000
CONTINGENCY (@ 15% original budget)	\$ 7,998,281	\$ 1,818,009				\$ 2,750,366
TOTAL CITY FUNDED	\$ 61,320,158	\$ 61,320,158	\$ 59,089,615	\$ 55,997,010	91%	\$ 61,320,158
USACE FUNDED**	\$ 21,277,761	\$ 21,277,761	\$ 21,277,761	\$ 20,558,716	97%	\$ 21,277,761
TOTAL CITY/USACE FUNDING	\$ 82,597,919	\$ 82,597,919	\$ 80,367,376	\$ 76,555,726	93%	\$ 82,597,919

* Data includes expenses from 5/22/14 which is the start of Bond eligible costs authorized by COV Resolution 14-33. \$254,321.77 in R&M expenses and other costs are not included.

** Reconciliation with USACE is in process; updates and closeout are anticipated.