

JUNE 2018



© Gary Minish

VALDEZ NEW BOAT HARBOR

CONSTRUCTION

Phase 2 Uplands Facilities and Inner Harbor Facilities -

Uplands facilities work primarily focused on the Warehouse Building with completion of the insulation, interior partitions, sheetrock work, mechanical and electrical rough-in and start of painting. At the Bilge Treatment Building, Mantech installed some mechanical piping, valves and fittings, but switched to work at the Warehouse Building. East Restroom work was limited to cleaning the concrete floors in both restrooms and applying epoxy paint. Zastrow installed reinforcement and placed concrete for slabs at three maintenance pads and two of the pedestrian gangway approaches.

During periodic lower tide levels, Pacific Pile and Marine (PPM) continued breaking bedrock with a large hydraulic hammer attached to an EX1200 excavator while an 870 excavator with bucket chipped rock along the West basin for a temporary work pad. Approximately 7,000 cubic yards was dredged by the EX1200 excavator/clam bucket on the Flexi-Float barge and transported by tug and dump barge to the offshore disposal site. Current work progress indicates that rock dredging and disposal will finish about two months later than projected in PPM's March schedule.

PPM submitted a plan for installing piling and floats for the Mooring Basin. Fabrication and assembly of the mooring floats, pedestrian gangways, drive-down float modules, transfer bridge and pontoon, continues at Seattle area facilities. The barge with pile driving equipment, piling and floats for the West mooring basin was rescheduled for late-July arrival at the project.

DESIGN TEAM - CONSTRUCTION SUPPORT

R&M continued reviewing some submittals and the Pile Driving Plan, responded to Requests for Information (RFIs), clarifications of construction documents and conflicts in the field, performed special

PROJECT ACHIEVEMENTS

- Continued assembly of mooring float and drive-down float components at Seattle area shops
- Inspected progress and quality of floats assembled and staged in the Seattle area
- Completed rough-in of electrical and plumbing at Warehouse building
- Installed plywood under canopies, hung and taped drywall, started painting in Warehouse
- Prepared and applied epoxy paint to floors in Restroom building
- Placed concrete at three Maintenance pads and approaches to Gangways #1 and #2
- Drilled and blasted 35% of the bedrock at the West basin and several blasts at the East basin
- Held Dedication Ceremony for the Airmen's Memorial at West end of Uplands



Drilling holes for blasting rock at the West part of mooring basin

JUNE 2018 PROJECT UPDATE (CONT.)

inspections and observations, and inspected progress and quality of floats assembly and staging the Seattle area for barge transport to the project.

USACE NAVIGATION IMPROVEMENTS

The USACE is administering the Western Marine Construction (WMC) contract for dredging the navigation channel and float basin and construction of the breakwaters. The USACE performed the 1-year warranty inspection of the breakwaters work and is working toward fiscal closeout of their contract with WMC. Arcadis will continue coordinating the closeout of the City's contract with USACE.



Alaska Air National Guard Veteran Chuck Volanti speaking at Dedication Ceremony Memorial for plaque honoring men he served with who died in a plane crash at Valdez during a relief mission following the 1964 Good Friday Earthquake

FUTURE MILESTONES

- Install electrical and mechanical equipment and fixtures at Warehouse
- Finish painting at Warehouse and install partitions and remaining accessories in Restroom
- Place concrete for Gangway #3 approach slab, curbs & gutter, sidewalk and plaza areas
- Install landscape items and pave the site except for construction zone for Drive-down Bridge abutment
- Finish blasting and dredging bedrock and survey the West basin area
- Continue blasting and dredging bedrock at Drive-down Float Basin
- Mobilize equipment and start driving piles and installing mooring floats for West basin
- Closeout City's contract with USACE for the dredging and breakwater work



Memorial Plaque dedicated for Alaska Air National Guardsmen

PROJECT TEAM

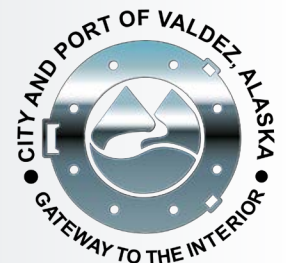
Nate Duval, Capital Facilities Project Manager, City of Valdez || 907.835.5478 ext. 1

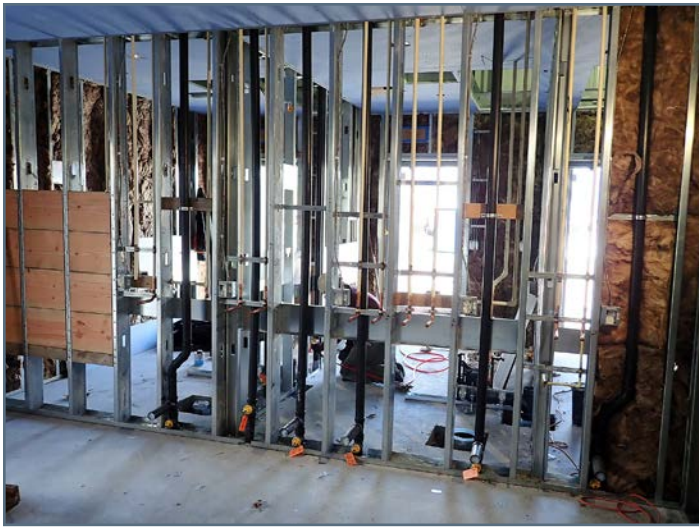
Ronnie Barcak, Project Manager, USACE || 907.753.5755

Kim Nielsen, Group Manager, Waterfront Engineering, R&M Consultants || 907.646.9602

Andy Romine, Project Manager, Pacific Pile and Marine || 907.360.4580

Ron Rozak, Construction Manager, Arcadis || 907.382.2933

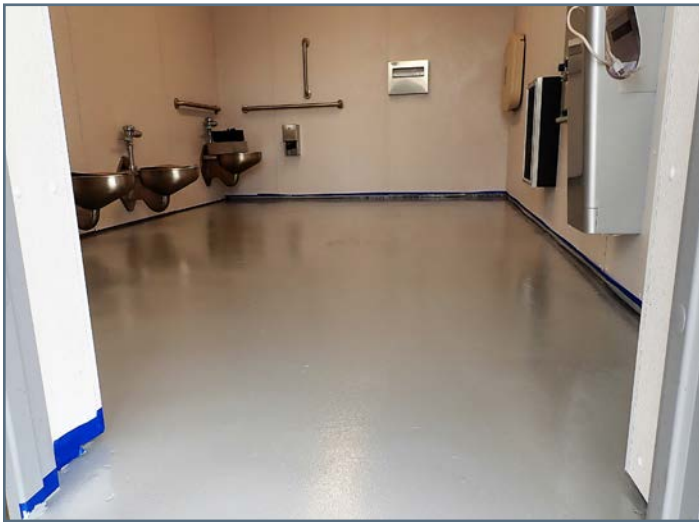




Blocking and rough-in plumbing for Warehouse Laundry Room



Installing door and window frames in the Warehouse building



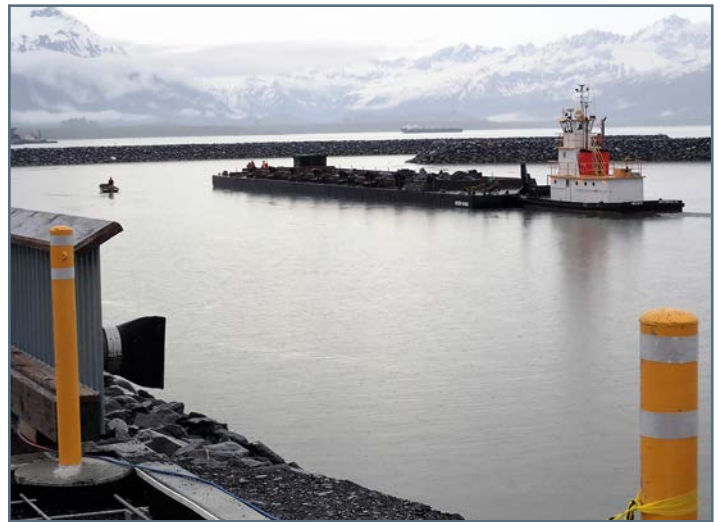
Epoxy painted floor in East Restroom building



Drilling holes for blasting rock at the West part of mooring basin



Deere 870 (at left) excavates and stages rock for EX1200 with clamshell bucket on Flexi-float barge to reach and place on dump barge



Tug pushing loaded dump barge to off-shore disposal site

PROJECT SCHEDULE

Task	2016	2017				2018				2019			
	Q4	Q1	Q2	Q3	Q4	Q1	Q2	Q3	Q4	Q1	Q2	Q3	Q4
CITY OF VALDEZ WORK													
Phase 1 Uplands (Civil work except paving)	■												
Phase 2 *													***
Design/Bid/Award/NTP	■	■	■										
Mooring Floats													
Fabrication/Delivery			■	■	■	■	■	■	■				
On-site Construction								■	■	■	■	■	■
Drive Down Float													
Fabrication/Delivery			■	■	■	■	■	■	■				
On-site Construction								■	■	■	■	■	■
In-water Rock Removal													
West Rock							■	■	■				
East Rock							■	■	■				
Uplands Facilities (Warehouse, East Restroom, Bilge Water Bldg.)													
Fabrication/Delivery			■	■	■	■	■	■	■				
On-site Construction				■	■	■	■	■	■	■	■	■	■
Paving/Landscaping								■	■				
Master Waterfront Plan (To be determined)													
Phase 3 Future Facilities (To be determined with Master Plan)													
Launch Ramp, Fish Cleaning Station, Wash-Down Pad, W. Restroom													
CORPS OF ENGINEERS (USACE) WORK													
Harbor Dredging and Breakwater Construction**	■		■	■	■	■	■	■	■				

*Solid lines reflect PPM's May 2018 schedule update with supplemental information provided during June 2018. ** WMC finished dredging and breakwater; contract closeout continues.
 *** Contract requires Phase 2 work to be completed by October 1, 2019.

BUDGET SUMMARY

Description	Original Budget	Revised Budget	Committed	Expenditures 6/30/18	% Spent	Estimate at Completion
DESIGN	\$ 2,451,971	\$ 3,659,047	\$ 3,659,047	\$ 3,030,378	83%	\$ 3,659,047
Design	\$ 1,851,971	\$ 2,215,983	\$ 2,215,983	\$ 2,231,917	101%	\$ 2,231,917
Design Team Services During Construction	\$ 600,000	\$ 1,443,064	\$ 1,443,064	\$ 798,461	55%	\$ 1,427,130
PROJECT MANAGEMENT	\$ 2,340,548	\$ 2,919,405	\$ 2,919,405	\$ 2,453,867	84%	\$ 2,919,405
Project Management	\$ 1,740,548	\$ 2,547,868	\$ 2,547,868	\$ 2,082,330	82%	\$ 2,547,868
Inspection/Testing	\$ 600,000	\$ 371,537	\$ 371,537	\$ 371,537	100%	\$ 371,537
USACE CONSTRUCTION - CITY PORTION	\$ 9,345,453	\$ 7,645,453	\$ 7,525,453	\$ 5,141,258	67%	\$ 7,525,453
Initial Basin	\$ 7,145,453	\$ 7,145,453	\$ 7,145,453	\$ 4,761,258	67%	\$ 7,145,453
Other Basin Modifications	\$ 2,200,000	\$ 500,000	\$ 380,000	\$ 380,000	76%	\$ 380,000
CITY CONSTRUCTION	\$ 39,023,904	\$ 44,638,458	\$ 44,561,293	\$ 30,275,032	68%	\$ 44,675,625
Phase 1 Uplands	\$ 19,013,040	\$ 19,191,437	\$ 19,191,437	\$ 19,191,437	100%	\$ 19,191,437
Phase 2 Base/Drivedown Floats, Uplands Fac.	\$ 8,976,100	\$ 24,990,542	\$ 24,990,542	\$ 10,766,382	43%	\$ 25,027,709
Upland Facilities (with Phase 2)	\$ 4,046,643	\$ -	\$ -	\$ -	0%	\$ -
Drive Down Float (with Phase 2)	\$ 4,951,721	\$ -	\$ -	\$ -	0%	\$ -
Drive-Down Float In-water Mods (with Phase 2)	\$ 1,342,500	\$ -	\$ -	\$ -	0%	\$ -
Hotel Hill Clearing	\$ 64,900	\$ 64,900	\$ 64,900	\$ 64,900	100%	\$ 64,900
Fish Cleaning	\$ 324,000	\$ -	\$ -	\$ -	0%	\$ -
Electric Primary	\$ 225,000	\$ 311,579	\$ 311,579	\$ 252,312	81%	\$ 311,579
CCTV/Security/Head End Equipment	\$ 80,000	\$ 80,000	\$ 2,834	\$ -	0%	\$ 80,000
ADMINISTRATION	\$ 60,000	\$ 100,000	\$ 99,245	\$ 92,036	92%	\$ 100,000
FFE	\$ 100,000	\$ 100,000	\$ -	\$ -	0%	\$ 100,000
CONTINGENCY (@ 15% original budget)	\$ 7,998,281	\$ 2,257,794				\$ 2,340,627
TOTAL CITY FUNDED	\$ 61,320,158	\$ 61,320,158	\$ 58,764,443	\$ 40,992,570	67%	\$ 61,320,158
USACE FUNDED**	\$ 21,277,761	\$ 21,277,761	\$ 21,277,761	\$ 20,558,716	97%	\$ 21,277,761
TOTAL CITY/USACE FUNDING	\$ 82,597,919	\$ 82,597,919	\$ 80,042,204	\$ 61,551,286	75%	\$ 82,597,919

* Data includes expenses from 5/22/14 which is the start of Bond eligible costs authorized by COV Resolution 14-33. \$254,321.77 in R&M expenses and other costs are not included.
 ** Reconciliation with USACE is in process; updates are anticipated.